



# PEUGEOT e-RIFTER

PRICES, EQUIPMENT AND TECHNICAL SPECIFICATIONS

Effective 1st August 2023

Model Year - 2023.5







Model shown is PEUGEOT e-Rifter GT with optional Deep Blue paint

**PEUGEOT e-Rifter models come with the following equipment as standard:**

**Body Style**

- Standard (5 seats)
- Long (7 seats)

**Safety and Security**

- ABS (Anti-lock Braking System) with EBD (Electronic Braking Distribution) and EBA (Emergency Braking Assistance)
- Airbags: Adaptive driver and front passenger airbags (includes passenger airbag deactivation function)
- Airbags: Front and rear curtain airbags
- Automatic door locking when moving off
- Automatic hazard light activation upon heavy brake application
- Child locking functionality on rear doors
- Electronic code immobiliser
- ESP (Electronic Stability Program) with Hill Start Assist
- Safety Pack: Lane Keeping Assist, Speed limit recognition and recommendation and Active Safety Brake
- Front optimised safety headrests and rear retractable headrests (x3)
- Front three-point retractable seatbelts, with force limiters
- Front and rear disc brakes
- Gear Shift Indicator
- Headlights left on audible warning
- Isofix child seat fittings (x3) in the second row
- PEUGEOT Connect SOS & Assistance
- Puncture Repair Kit
- Seatbelt unfastened on the move audible and visual alert for front and rear seats
- Tyre pressure sensors

**Interior Features**

- Seating: 3 independent rear seats in 2nd row
- 2 heights parcel shelf
- Upper glove compartment
- Full width front overhead storage shelf
- Driver and Passenger dashboard mounted cup holders

**Comfort and Convenience**

- Electric and heated door mirrors
- Electric power steering with reach- and rake-adjustable steering column
- Air Conditioning (manual)
- Front interior light with reading spotlights (x2) and rear interior light with timer
- Front windscreen wiper with multi-speed setting
- Heated rear windscreen & wiper blade
- Multifunction trip computer
- Electric front windows
- PEUGEOT i-Cockpit®: compact steering wheel
- PEUGEOT i-Cockpit®: Head-up instrument panel
- Rear windscreen wiper triggered automatically in reverse gear
- Remote central locking (two remotes)
- Fixing rings (x4), in load area

**In Car Entertainment**

- PEUGEOT i-Cockpit®: 8.0" capacitive touchscreen
- Bluetooth® telephone facility
- DAB Radio (Digital Audio Broadcastin
- USB socket
- 6-Speaker radio, MP3 compatible
- 12 V socket

**Exterior Features**

- Contrasting wheel arch trim
- Two sliding side doors
- Glossy black roof rails

**Exterior Lighting and Visibility**

- Rear LED PEUGEOT signature 'Claw Effect' lights





**ALLURE** Offering sharp design, versatility and practicality on every journey.

**GT** The best of all worlds, sports styling combined with outstanding levels of efficiency and

**Comfort and Convenience**

- Manual Air Conditioning
- Air Vents in 2nd row with USB socket
- Electric parking brake
- Parking sensors - Rear

**In Car Entertainment**

- PEUGEOT i-Cockpit®: 8.0" capacitive touchscreen
- Bluetooth® telephone facility
- DAB Radio (Digital Audio Broadcasting)
- USB socket at the back
- Voice recognition (radio, navigation and telephony) linked to Mirror Screen® features

**Interior Features**

- Picasso blue interior ambience
- Seating trim: 'Puma' cloth seat trim with blue overstitch detail
- Seating: Height adjustable driver seat with adjustable lumbar support, under-seat storage and elbow rest
- Seating: Foldable passenger seat with under-seat storage and elbow rest
- Seating: Tray tables at the back of the front seats
- Seating: 3 independent rear seat (2 row)
- High console between front seats with storage compartment

**Exterior Features**

- Black door mirrors
- Black front bumper with coloured inserts
- Radiator Grille: 3D stamped effect and chrome surround
- Body coloured front bumper
- Body colours door handles
- 16" Steel Wheel with 'Tongariro' wheel trim



**Allure specification +**

**Comfort and Convenience**

- Automatic dual zone climate control
- Air-vents in 2<sup>nd</sup> row with fan strength command and USB Socket
- PEUGEOT Open & Go (keyless entry and push button start)
- Powerfolding Door Mirrors
- Dark tinted ear side and tailgate windows
- Electric rear windows
- Visio Park 1 (including rear parking sensors and 180° Colour Reversing camera)

**Exterior Features**

- 17" 'Aoraki' Alloy Wheel
- Door sill protectors with gloss black inserts
- Radiator grille: 3D stamped effect and black surround
- 'GT' emblems (front wings and tailgate)
- Front and rear scuff plates
- Gloss Black roof bars (Aluminium on Long versions)
- Opening rear tailgate window

**Interior Features**

- 'Quente Brown' interior ambience
- Seating trim: 'Casual' cloth seat trim with overstitch detail
- Leather Steering Wheel

**In Car Entertainment**

- 10" digital instrument cluster





**PEUGEOT i-Cockpit®**

**PEUGEOT i-Cockpit®:**

Since launching in 2012, PEUGEOT i-Cockpit® has re-written the rule book for car interior architecture. The PEUGEOT i-Cockpit® philosophy centres around a driving environment that puts you in control, allowing a greater connection to the road. For PEUGEOT Rifter, the PEUGEOT i-Cockpit® helps to make driving more instinctive.

The PEUGEOT i-Cockpit®, comprises of the following key features:

**Head-up instrument panel**

Available as standard across the PEUGEOT e-Rifter range, the 3.5" raised instrument panel increases driver comfort and safety. As the panel is positioned higher, it is closer to the road and is more within the driver's field of vision. This can increase safety when compared to a conventional setup where the dials sit within the wheel, further from the road.

Sitting comfortably between the dials is an LCD screen complete with white graphics. Designed to relay key information to the driver the screen can display key data including, digital speed read out, satellite navigation directions and fuel economy data.

**Compact multi-function steering wheel**

Compact dimensions coupled with a re-designed shape enhance every journey in the PEUGEOT e-Rifter. Out on the road the compact dimensions increase the visibility of the car's instruments whilst in the corners it provides heightened responses and improved agility. When it comes to round town or navigating car parks its compact size make light work of wheel winding to manoeuvre into a space. In terms of finish, all models have a steering wheel trimmed with Mistral full-grain leather and stitch detail.

**8.0" capacitive colour touchscreen (Standard on Allure versions upwards)**

With crystal clear graphics, the 8.0" capacitive touchscreen houses several key technological features on the PEUGEOT e-Rifter. Capacitive technology helps to give Smartphone levels of responsiveness. In keeping with the PEUGEOT i-Cockpit® theme, the touchscreen is angled towards the driver.

For greater accessibility the touchscreen includes access keys around the outside of the screen display, these enable direct access to the wealth of functionality available.

Features accessed via the touchscreen include:

- DAB Radio (Digital Audio Broadcasting)
- Mirror Screen®: (Apple CarPlay™ and Android Auto)
- 3D satellite navigation\* (includes TomTom® Live updates)^ and PEUGEOT Connect and SOS\*

\*Depending on versions

^Subject to subscription - for renewal, Terms and Conditions, and any other details about Connected Navigation services, visit: <https://services-store.peugeot.co.uk..>



**Digital Instrument Panel**



**Compact Multifunction Steering Wheel**



**8.0" Capacitive Colour Touchscreen**



# New PEUGEOT e-Rifter

Live the Power of Choice

## Full Electric Vehicle

The PEUGEOT e-Rifter is available as a full electric vehicle. For even more versatility, both the Standard and Long lengths are available with the 50 kWh battery and allow a range of up to 172 miles (WLTP).

## Charging Flexibility

The PEUGEOT e-Rifter offers ultimate charging flexibility with two available on-board chargers and 2 modes available.

Two types of on-board chargers are available, a 7.4 kW single-phase charger as standard, or an 11 kW three-phase charger (available as an option).

**Fast (AC)** from a 7.4 kW wallbox full charge in 7.5 hours and from a 11 kW wallbox full charge in just 5 hours

**Rapid (DC)** 100kW public rapid charge terminals allow 0-80% charge in just 30 minutes.

## PEUGEOT e-Rifter Front View



Technical

### Electric 50 kWh 136hp motor

The PEUGEOT e-Rifter offers a lively and stimulating drive thanks to its full electric motor. You benefit from immediate reactivity with 260Nm of torque from 0mph. The silent engine offers a serene drive without vibration.

### EMP2 Platform

Based on the **EMP2** (Efficient Modular Platform) multi-energy modular platform, the PEUGEOT e-Rifter offers a full electric powertrain, with a maximum power of 100 kW and a maximum torque of 260 Nm.

### Range

Up to 172 miles WLTP

## Usage

The PEUGEOT e-Rifter offers 3 driving modes from the mode selector:

**Eco** (60 kW, 180 Nm): for optimising range

**Normal** (80 kW, 210 Nm): for everyday use

**Power** (100 kW, 260 Nm): for optimal performance

Two braking modes are available

### Moderate

**Emphasised** (accessible from push "B", for "Brake" located on the gearbox control), for increased deceleration when the accelerator pedal is released

All versions of the PEUGEOT e-Rifter are equipped with the Electric Parking Brake, freeing up floor space.

## 'e' Monogram Badging



Technology

In the centre of the vehicle is the touchscreen from which you can access the "Electric" menu: **"Flow"** to view the live energy flow **"Statistics"** to display the consumption statistics **"Charge"** which allows you to programme a deferred charge  
In addition, you can view the available charging points, the remaining range, or set the passenger compartment's heating preconditioning settings.

### AVAS: Acoustic Vehicle Alerting System

Generates a sound when travelling at low speed, audible outside the vehicle for pedestrian safety (Standard option).



PEUGEOT e-Rifter Rear View



e-Rifter Charging Capability

## EV Services

### MyPEUGEOT App

**Charge management:** Control, plan, launch and check the vehicle's charge remotely

**Climate preset:** Remotely plan and control the heating or air conditioning in the interior of your car.

**e-Coaching:** Consumption logs and statistics

### Charging Pass

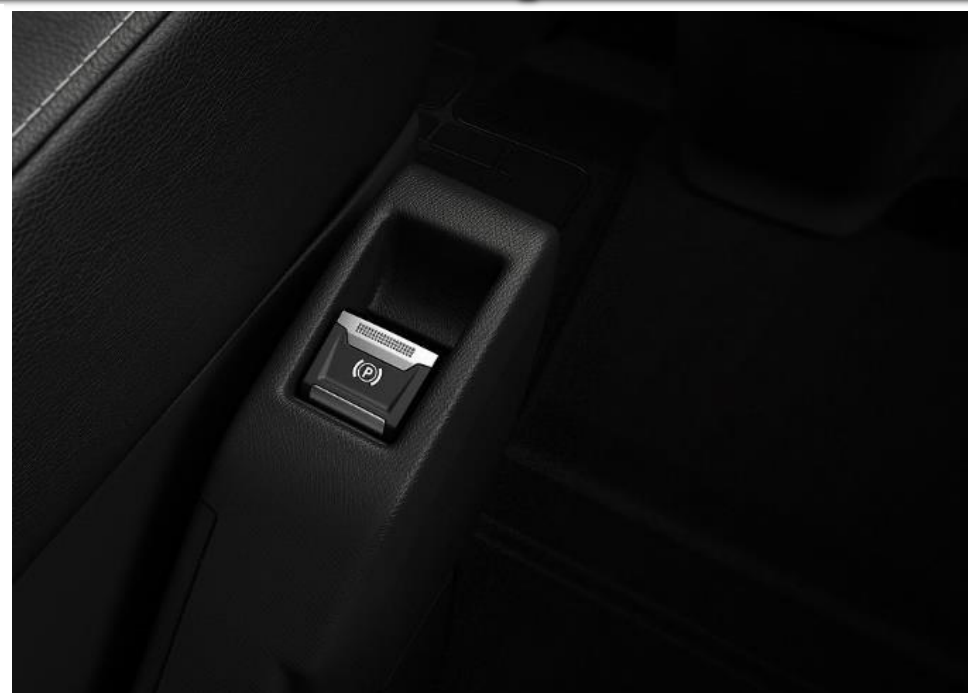
PEUGEOT will provide access to certain UK public charging points through a free subscription for an introductory period.

## Styling

The PEUGEOT e-Rifter comes with distinctive and exclusive touch

A specific 'e' monogram badging as well as the name of the car at the rear.

## e-Toggle selector



Electric Parking Brake



10" Digital Instrument Panel



Automatic Emergency Braking System (AEBS2)

**Automatic Emergency Braking System (AEBS2)**

An intelligent autonomous braking system designed to avoid a collision or limit its severity by reducing the vehicle's speed. The system is triggered if the driver does not react quickly enough, by activating the vehicle's brakes.

A multifunction camera located at the top of the windscreen coupled with a bumper mounted radar are able to detect obstructions on the road. The system is able to detect vehicles that are moving in the same direction or are at a stop, together with pedestrians in the road.

**Distance Alert System**

Working in conjunction with the AEBS2 system, the distance alert function warns the driver if the vehicle risks a collision with the vehicle in front or a pedestrian in the road. Two levels of warning are available; the first 'Amber' warning provides a visual alert to the potential risk. In a more severe instance a 'Red' visual and audible alert indicate a collision is imminent and driver action is required, failure to act triggers the AEBS2 system.



Trailer Sway Mitigation System (TSM)

**Trailer Sway Mitigation System**

Optional tow bar includes Trailer Sway Mitigation System (TSM)

TSM brings in an additional ESP® function which reduces the vibrations of the trailer or, if necessary, slows the vehicle. Vibrations are reduced via individual and alternated braking manoeuvres on the front wheels. In most cases, these manoeuvres are sufficient to completely eliminate the vibrations and thereby averting all danger. Should the vibrations be very strong, then the system reduces the engine torque and applies brakes on all four wheels to reduce the speed as quickly as possible.

TSM operates at speeds between 40 and 100 mph. TSM detects the trailer once the trailer's electric connector is hooked up to the towing vehicle.

Driver Attention Alert

**Driver Attention Alert 3 (DAA3)**

It is important to take frequent breaks when travelling over long distances, to better guarantee your safety and the safety of those around you. PEUGEOT e-Rifter features a timed alert system that operates at speeds in excess of 40mph, after two hours of driving a message is displayed recommending that you take a break.

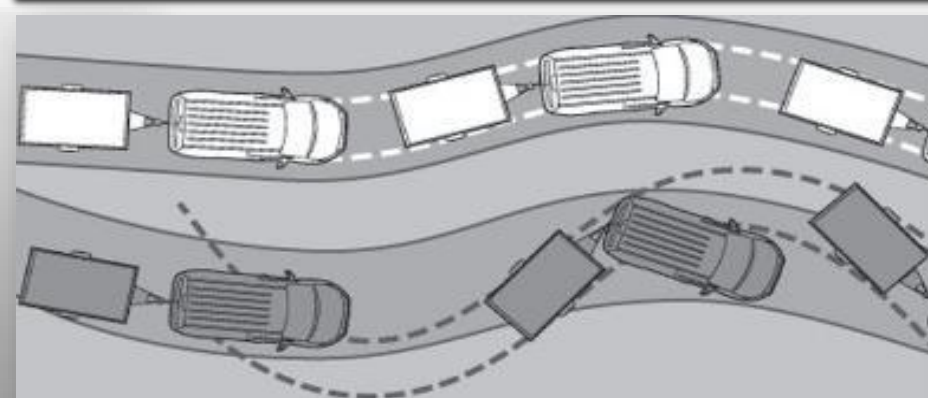
In addition to a timed alert and controlled by a camera at the top of the windscreen designed to analyse the vehicles trajectory, DAA3 evaluates the vigilance of the driver at speeds of over 40mph.

By identifying deviations relative to the road markings PEUGEOT e-Rifter is able to determine whether the vehicle's behaviour reflects a certain degree of driver drowsiness or inattention. If it is felt that the driver needs to take better care on the road a visual and audible alert will occur. If more than three instances occur, the driver will be advised to take a break.

Blind Spot Monitoring

**Blind Spot Monitoring** - optional

Now you can enjoy the feeling of having eyes in the back of your head. Using lateral ultrasound sensors to cover areas out of your field of vision, an LED illuminates in either side door mirror to alert to the presence of a car, lorry, motorbike or bicycle in your blind spot. The system works when overtaking a slower vehicle or when overtaken by a faster vehicle. This intelligent feature operates from speeds as low as 8mph right up to the National Speed Limit.



Lane Keeping Technologies

**Lane Keeping Technologies**

PEUGEOT e-Rifter is always one step ahead. Featuring advanced lane keeping technology, the vehicle is able to identify lines on the road via a windscreen mounted camera. The technology operates in the following ways:

**Lane Departure Warning** a system that monitors continuous and discontinuous lines and warns the driver if a longitudinal lane marking on the ground is accidentally crossed. If steering deviation is detected, you are alerted by a flashing indicator on the digital instrument panel and an audible signal in the cabin.

**Active Lane Keeping Assistance** in addition to visually and audibly alerting the driver, PEUGEOT e-Rifter also features LKA. As soon as the system identifies a risk of accidentally crossing one of the marking lines detected on the ground, the steering is gradually corrected to keep the



Image used for illustrative purposes only.

PEUGEOT Connect SOS & Assistance

**PEUGEOT Connect SOS & Assistance** - Standard

A vehicle locating communication unit, this feature can be used manually (dedicated SOS button on the console) or automatically (if pyrotechnic devices are deployed). It locates the vehicle precisely and triggers the sending of the appropriate emergency services for a rapid response.

PEUGEOT are the pioneers of this technology, since launching in 2003. The system comes with a 10-year subscription and uses a GPS module and SIM card (built in to the system).



Speed Limit Recognition

**Speed Limit Recognition and Recommendation**

Linked to the safety and safety plus option packs. Using the windscreen mounted camera, PEUGEOT e-Rifter features speed limit sign recognition, leaving you in no doubt over the speed limit. Upon detecting a speed limit sign this information is read by the camera and displayed in colour on the head-up instrument panel.

In addition to been made aware of the speed the driver also has the option to adapt their speed to the speed limit on the particular road via the vehicles cruise control stalk. The vehicle will then adjust its speed accordingly.



Image used for illustrative purposes only.

Image used for illustrative purposes only.

PEUGEOT Smartbeam Assistance

**PEUGEOT Smartbeam Assistance** - Optional dependent on version

Linked to the safety plus option packs, PEUGEOT Smartbeam Assistance gives you one less thing to think about when driving at night. Controlled via a windscreen mounted camera, the system continuously analyses driving conditions, for instance the proximity of other vehicles.

PEUGEOT Smartbeam Assistance automatically switches headlights to full beam when conditions allow, allowing you to tap into the full potential of the halogen headlights.

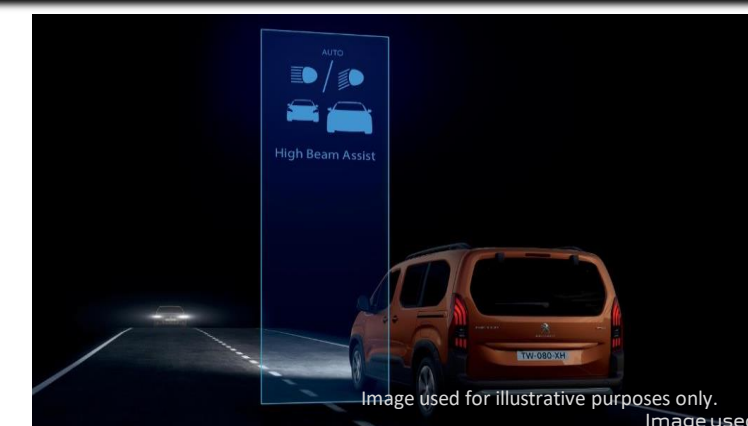


Image used for illustrative purposes only.

Image used for illustrative purposes only.





### Connected 3D Navigation\*

**Satellite Navigation** - Optional

Linked to the 8.0" capacitive colour touchscreen, the system includes European mapping, 3D city mapping and voice recognition. The system also includes a 6 months free-trial subscription^ to PEUGEOT Connect allowing a connection to online navigation services (in partnership with TomTom®). Key features of PEUGEOT Connect include:

- **TomTom® Traffic:** Real-time updates on traffic conditions (traffic jams, road works) and suggested alternative routes.
- **Local Weather:** Displays forecasted weather conditions along the route.
- **Fuel Stations:** Displays nearby fuel stations and pricing.
- **Local search:** Access address and contact detail information for a point of interest\*

^\*Subject to subscription – for renewal, terms and conditions, and any other details about Connected Navigation services, visit: <https://services-store.peugeot.co.uk/>

### Mirror Screen®

**Mirror Screen®** - Standard

Allows the mirroring of a compatible smartphone screen to access the key functionality on the handset. Once paired functions are displayed on the 8.0" capacitive colour touchscreen. System features vary by provider/phone and can include navigation, text display, text reading, media functionality voice control. Mirror Screen® uses the following:

- **Apple CarPlay™**
- **Android Auto**

\*For further information on Apple CarPlay™ and smartphone compatibility please visit: <https://www.apple.com/ios/carplay/>  
\*For information on Android Auto and smartphone compatibility please visit: <https://www.android.com/auto/>



### VisioPark 1

**180° Colour Reversing Camera** - Standard on GT

A camera located on the rear of the vehicle is linked to the 8.0" capacitive colour touchscreen. Offering increased visibility when reversing, with a selection of views to choose from, you'll never look back:

- **Rear Grid View:** a clear view of obstructions to the rear of the vehicle coupled with grid lines oriented to the positioning of the steering wheel, offering perspective for distances of one and two metres respectively from the rear bumper.
- **180° View:** Divides the screen into three zones, offering a clear view of vehicles approaching from the side. Perfect for safely reversing out of parking spaces.
- **Overhead View:** the camera records the surroundings during a manoeuvre to reconstitute an overhead rear view of the vehicle in its



### Park Assist

**Park Assist pack: Includes VisioPark1** - Optional

**Park Assist:** This system provides active assistance for parking by detecting a parking space and then operating the steering system to park in this space.

During a parking manoeuvre the vehicle operates the steering whilst the driver manages the pedals and gearbox control. During the entry and exit from a space the system provides visual and audible information to improve the safety of the manoeuvre. The system works with both parallel and bay parking.

### PEUGEOT Open and Go (Keyless Entry)

**PEUGEOT Open and Go** - Standard on GT versions

Using sensors mounted in the front door handles, PEUGEOT e-Rifter can be opened without removing the key from your pocket or bag, simply grab the handle and the vehicle will automatically unlock.

Once inside a simple press of the stop start button is all that is required.



### 'Magic Wash' System

**'Magic Wash' System:** Mounted in the front windscreen wipers, PEUGEOTE-Rifter models benefit from our innovative windscreen wash system, designed to more effectively distribute water and reduce wastage. Using nozzles located above the wiper blades, fluid is distributed as the wiper sweeps the windscreen. This avoids the 'temporary blindness' of more conventional bonnet mounted systems between fluid release and wiper sweeping, improving visibility.



Standard or Long version

**Standard or Long**

Built on PEUGEOT's modular EMP2 platform, the PEUGEOT e-Rifter provides the fundamentals of practical, versatile design and is able to excel in any situation.

e-Rifter comes with a 5-seat configuration as a Standard version (4.40m) and a 7-seat configuration as a Long version (4.75m).

e-Rifter comes with 3 individual folding rear seats\*\* and the clever adaptability and modularity of this leisure activity vehicle. With the passenger seat folded\* you can fit objects up to 3m long on the Long version.

With its clever adaptability, the PEUGEOT e-Rifter is never short of space and loads up quickly and efficiently.

\*depending on versions, Standard length only.

\*\*available on Standard versions only



Intelligent Storage Solution

**Intelligent Storage Solutions**

The e-Rifter's optimised architecture means that it boasts one of the most capacious offerings on the market.

According to version, the boot of the e-Rifter features a loading capacity of 775 litres under shelf, up to 4,000 litres under ceiling storage, and an additional enclosed space capable of storing up to 186 litres.

The PEUGEOT e-Rifter features numerous and ergonomic storage compartments accessible for all passengers, some of which are detailed below:

- Under-seat storage on the driver seat,
- Upper glove compartment,
- High console between front seats with storage compartment\*,
- Zenith® Roof\*

\* optional on Standard versions only



Zenith® Roof

**Zenith® Roof:** Optional

The wide, one-section panoramic glass roof, can be covered with an electric blind.

The floating, translucent arch, including storage compartments, floods the passenger compartment with light. The floating arch has a capacity of up to 14 litres and is edged with LED ambience lighting.

The Zenith Roof® has many accessible storage areas giving a total 92 litre capacity: in the roof storage compartment, in the arch and in the roof case which can be accessed from the rear seats and/or the boot.



Fold Flat Rear Seats

**Fold Flat Rear Seats:** Standard on all versions

Three individual seats\* allow you to create a flat floor for easy loading. The flat floor can also be created with the 2/3-1/3 bench seat or individual seats.



Opening Rear Tailgate Window

**Opening rear tailgate window** - Standard on GT

For increased modularity and ease of access, the opening rear tailgate window means you can gain entry to the roof case (on M versions) or your boot.

With the 2 height position parcel shelf you can load your groceries with no need to open the tailgate. The parcel shelf can support up to 25kg.





# PEUGEOT e-Rifter Range: Price List

		ENGINE	FUEL	RDE2 COMPLIANT	HP	TITRE CODE (DIALOG DESCRIPTION)	CO <sub>2</sub> g/km	BASIC MRRP	VAT (£)	TOTAL MRRP	OTR COSTS	ON THE ROAD MRRP	P11D VALUE (£)	2023/2024 BIK %
Standard	Allure	Electric 50kWh 136^	Electric	Yes	136	1PK9AFTESFT0A054 (ALL STD ELECT)	0	26,929.18	5,385.84	32,315	955	<b>33,270</b>	33,215	1
	GT	Electric 50kWh 136^	Electric	Yes	136	1PK9AFWESFT0A054 (GT STD ELECT)	0	28,620.84	5,724.17	34,345	955	<b>35,300</b>	35,245	1
Long	Allure	Electric 50kWh 136^	Electric	Yes	136	1PK9CLTESFT0A054 (ALL STD ELECT)	0	28,595.84	5,719.17	34,315	955	<b>35,270</b>	35,215	1
	GT	Electric 50kWh 136^	Electric	Yes	136	1PK9CLWESFT0A054 (GT LONG ELECT)	0	30,287.51	6,057.50	36,345	955	<b>37,300</b>	37,245	1

CO2 figures, P11D values, BIK% and MRRP pricing shown above are for a standard vehicle without any additional optional equipment. CO2 figures are used to calculate Vehicle Excise Duty (VED) for the first registration of the vehicle and BIK%. The addition of optional extras could increase the certified CO2 emission output. This in turn may affect the amount of VED payable upon registration, and, for company car drivers, the amount of Benefit in Kind (BIK) tax payable.

For further information on CO2 and pricing for vehicles with optional equipment, please visit [www.peugeot.co.uk](http://www.peugeot.co.uk) and configure your chosen vehicle with your preferred options.

Figures shown are for comparison purposes and should only be compared to the fuel consumption and CO2 values of other cars tested to the same technical standard.

The fuel consumption achieved, and CO2 produced, in real world conditions will depend upon a number of factors including, but not limited to: the accessories fitted (pre and post registration); variations in weather; driving styles and vehicle load. The WLTP (Worldwide Harmonised Light Vehicles Test Procedure) is used to measure fuel consumption and CO2 figures.\*\*\*'On the Road' MRRP includes registration plates and delivery to retailer (including VAT), 12 months' Vehicle Excise Duty and new vehicle registration fee of £55. Excludes fuel and insurance.

All information and prices correct at time of publication, but are subject to change at any time without prior notice (which may occur as a result of matters including, but not limited to, any changes in legislation and/or any changes by the government).



# PEUGEOT e-RIFTER: options

Standard	<input checked="" type="radio"/>
Optional	<input type="radio"/>
Not available	-

	OPTION CODE	Allure	GT	Basic RRP £ Excluding VAT	VAT @ 20%	Total RRP £ Including VAT
<b>PAINT</b>						
Metallic paint	M0...	<input type="radio"/>	<input type="radio"/>	541.67	108.33	<b>650.00</b>
<b>SAFETY AND SECURITY</b>						
Alarm (Thatcham category 1 approved) - <i>Incompatible with the Holiday Pack (J6AL)</i>	AB13	<input type="radio"/>	<input type="radio"/>	166.67	33.33	<b>200.00</b>
<b>COMFORT AND CONVENIENCE</b>						
Visio Park 1 (including rear parking sensors and 180° Colour Reversing camera)	QK02	<input type="radio"/>	<input checked="" type="radio"/>	125.00	25.00	<b>150.00</b>
Park Assist pack: Visio Park 1 with Blind Spot Detection, Front Parking Sensors and Park Assist	N402	-	<input type="radio"/>	583.33	116.67	<b>700.00</b>
PEUGEOT Open and Go (keyless entry and push button start)	YD01	<input type="radio"/>	<input checked="" type="radio"/>	208.33	41.67	<b>250.00</b>
<b>OPTION PACKS</b>						
<b>Style Pack:</b> - 16" 'Taranaki' Alloy Wheel ( <b>DZSB</b> ) - Dark tinted rear side and tailgate windows ( <b>VD10</b> )	J6AD	<input type="radio"/>	-	416.67	83.33	<b>500.00</b>
<b>Connect Pack:</b> <i>Incompatible with Holiday Pack (J6AL)</i> - Electrochromic rearview mirror ( <b>RL05</b> ) - Connected 3D Navigation <sup>^</sup> : includes PEUGEOT Connect SOS and Assistance and SpeedCam / Danger Zones (6-months free-trial subscription) <sup>^</sup> ( <b>WL2K</b> )	J6AH	<input type="radio"/>	<input type="radio"/>	416.67	83.33	<b>500.00</b>
<b>Holiday Pack</b> (Standard length versions only): <i>Incompatible with (Thatcham category 1 approved) Alarm (AB13) and Connect Pack (J6AH)</i> - Modutop Roof <sup>®</sup> : Cielo panoramic roof with electric interior blind, background lighting, and storage. Rear storage roof case accessible from the 2nd row and the trunk ( <b>OU01</b> ) - Child Pack: additional child rear view mirror, blinds on rear side windows, and underfloor storage compartments in row 2 ( <b>XN01</b> )	J6AL	-	<input type="radio"/>	625.00	125.00	<b>750.00</b>
<b>Techno Plus Pack:</b> - Advanced Grip Control <sup>®</sup> with Hill Assist Descent Control and 16" alloy wheels ( <b>UF02</b> ) - 220V socket ( <b>ES11</b> )	J6AO	-	<input type="radio"/>	266.67	53.33	<b>320.00</b>
<b>CHARGING</b>						
11kW Tri-phase On Board Charger	LZ04	<input type="radio"/>	<input type="radio"/>	250.00	50.00	<b>300.00</b>
<b>EXTERIOR FEATURES</b>						
Tow bar pre-conditioning (Standard Length versions only) Standard tow hook support with wires, box and brackets	AQ11	<input type="radio"/>	<input type="radio"/>	208.33	41.67	<b>250.00</b>

<sup>^</sup>Subject to subscription - for renewal, terms and conditions, and any other details about Connected Navigation services, visit: <https://services-store.peugeot.co.uk>



# PEUGEOT e-RIFTER: Equipment

Standard	●
Optional	○
	-

ALLURE	GT
--------	----

BODYSTYLE		
Standard (5 seats)	●	●
Long (7 seats)	●	●

SAFETY AND SECURITY		
ABS (Anti-lock Braking System) with EBD (Electronic Braking Distribution) and EBA (Emergency Braking Assistance)	●	●
Airbags: Adaptive driver and front passenger airbags (includes passenger airbag deactivation function)	●	●
Airbags: Front and rear curtain airbags	●	●
Automatic door locking when moving off	●	●
Automatic hazard light activation upon heavy brake application	●	●
Child locking functionality on rear doors	●	●
Electronic code immobiliser	●	●
ESP (Electronic Stability Program) with Hill start assist	●	●
Front optimised safety headrests and rear retractable headrests (x3), height-adjustable.	●	●
Front three-point retractable seatbelts, with force limiters	●	●
Front and rear disc brakes	●	●
Gear Shift Indicator (N/A on Electric versions)	●	●
Headlights left on audible warning	●	●
Isofix child seat fittings (x3) in the second row	●	●
PEUGEOT Connect SOS and Assistance	●	●
Safety Pack: Lane Keeping Assist, Speed limit recognition and recommendation and Active Safety Brake	●	●
Safety Plus Pack : Safety Pack, Traffic sign recognition, Driver attention monitoring system, Low / High beam function	●	●
Visibility Pack: Automatic Front flat blade wiper with magic wash system and turn on headlamp (include steering wheel with integrated command)	●	●
Puncture Repair Kit	●	●
Tyre pressure sensors	●	●

COMFORT AND CONVENIENCE		
Air conditioning (manual)	●	-
Automatic dual zone climate control	○	●
Air-vents in 2nd row with fan strength command and USB socket	●	●
Dark tinted opening rear side and tailgate windows	○	●
Electric and heated door mirrors	●	●
Electric parking brake	●	●
Electric power steering with reach- and rake-adjustable steering column	●	●
Front interior light with reading spotlights (x2) and rear interior light with timer	●	●
Front windscreen wiper with multi-speed setting	●	●

ELECTRIC VEHICLE SPECIFIC		
Electric Charging Cable: Mode 3 Type 2 for Wallbox	●	●
7.4KW single-phase On Board Charger	●	●
AVAS: Acoustic Vehicle Alerting System. Generates a sound when travelling at low speed, audible outside the vehicle for pedestrian safety	●	●
Remote temperature pre-conditioning (requires e-Remote Control service subscription - free of charge)	●	●

ALLURE	GT
--------	----

COMFORT AND CONVENIENCE		
Tailgate with heated rear windscreen & wiper blade	●	●
Multifunction trip computer	●	●
Electric front windows	●	●
Electric rear windows	-	●
Parking sensors - rear	●	-
Visio Park 1: Rear parking sensors and 180° Colour Reversing camera	○	●
Visio Park 1 with Blind Spot Detection, Front Parking Sensors and Park Assist	-	○
PEUGEOT i-Cockpit®: compact steering wheel	●	●
PEUGEOT i-Cockpit®: Digital instrument cluster	●	●
fixing rings (x4) in load area	-	●
PEUGEOT Open and Go (keyless entry and push button start)	○	●
Power folding door mirrors Door mirrors will be black	-	●
Rear windscreen wiper triggered automatically in reverse gear	●	●
Remote central locking (two remotes)	●	●
Fixing rings (x4) in load area	●	●
Rear restraining net	-	○

INTERIOR FEATURES		
Seating trim: 'Puma' cloth seat trim with blue overstretch detail	●	-
Seating trim: 'Casual' cloth seat trim with overstretch detail	-	●
Picasso blue interior ambience	●	-
Quente Brown interior ambience	-	●
Electrochromic rearview mirror	-	●
Leather Steering Wheel with integrated controls	○	●
Seating: Height adjustable driver seat with adjustable lumbar support, under-seat storage and elbow rest	●	●
Seating: Foldable passenger seat with under-seat storage and elbow rest	●	●
Seating: Tray tables at the back of the front seats	●	●
Overhead storage	●	●
Seating: 3 independent rear seat (2nd row)	●	●
Seating: 2 independent and removable sliding 3rd row seat Standard on Long versions only	●	●
2 heights parcel shelf Standard versions only	●	●
Retractable parcel shelf Long versions only	●	●
Upper glove compartment	●	●
Driver and Passenger dashboard mounted cup holders	●	●
High console between front seats with storage compartment	●	●



# PEUGEOT e-RIFTER: Equipment

Standard	●
Optional	○
	-

Allure	GT
--------	----

## IN CAR ENTERTAINMENT

Bluetooth® telephone facility	●	●
DAB Radio (Digital Audio Broadcasting)	●	●
8.0" capacitive colour touchscreen with Mirror Screen®: (Apple CarPlay™ , Android Auto)	●	●
USB socket	●	●
USB socket at the back	●	●
Voice recognition (radio, navigation and telephony features)	●	●
6-Speaker radio, MP3 compatible	●	●
12V socket	●	●

## EXTERIOR FEATURES

Black front bumper	●	-
Black front bumper with chrome strip grille	-	●
Contrasting wheel arch trim	●	●
Door sill protectors	●	-
Door sill protectors with gloss black inserts	-	●
Radiator grille: 3D stamped effect and chrome surround	●	-
Radiator grille: 3D stamped effect and black surround	-	●
Gloss black door mirrors	●	●
Body-colour exterior door handles	●	●
'GT' emblems (front wings and tailgate)	-	●
Front and rear scuff plates	●	-
Aluminium roof bars	●	-
Gloss Black roof bars	-	●
16" Steel Wheel with 'Tongariro' wheel trim	●	-
16" 'Taranaki' Alloy Wheel	○	-
17" 'Aoraki' Alloy Wheel	-	●
Two glazed sliding side doors	●	●
Flat tyre emergency tools: Towing ring, wheel chock/wedge, tool to remove headlamp.	●	●

## LIGHTING AND VISIBILITY

Halogen headlights	●	●
LED daytime running lights built into the headlight unit	●	●
Rear LED PEUGEOT signature 'Claw Effect' lights	●	●
Front fog lights	●	●
Visibility pack: automatic lights and automatic MagicWash® windscreen wipers	●	●
Visibility pack: electrochromic rear view mirror (auto dimming)	●	●



Image used for illustrative purposes only.

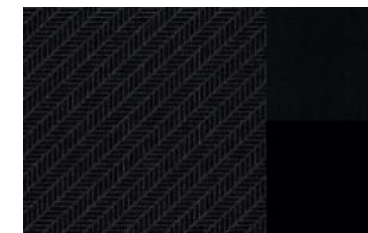
^Subject to subscription - for renewal, terms and conditions, and any other details about Connected Navigation services, visit: <https://services-store.peugeot.co.uk>

For further information visit our website at [peugeot.co.uk](http://peugeot.co.uk) or contact your local PEUGEOT Retailer.

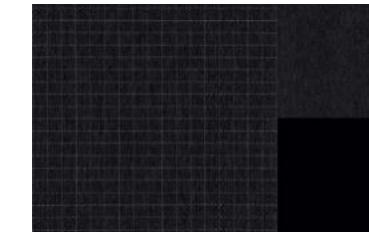


**PEUGEOT e-Rifter: Trims and Wheels**

		ALLURE	GT
<b>Upholstery</b>		'Puma' cloth seat trim with blue over stitch detail	'Casual' cloth seat trim with over stitch detail
<b>Trim Code</b>		OCFY	ODFY
<b>SOLID PAINT</b>			
<b>Ice White</b>	P0PR	●	●
<b>METALLIC PAINT</b>			
<b>Nera Black</b>	M09V	○	○
<b>Cumulus Grey</b>	M0F4	○	○
<b>Nimbus Grey</b>	M0VL	○	○
<b>Deep Blue</b>	M0JG	○	○



'Puma' cloth seat trim with blue over stitch detail



'Casual' cloth seat trim with over stitch detail



Ice White



Nera Black



Cumulus Grey



Nimbus Grey



Deep Blue

**PEUGEOT Rifter Range: Wheels**

<b>16" Steel Wheel with 'Tongariro' wheel trim</b>	DZJN + EHKV	●	-
<b>16" 'Taranaki' Alloy wheel</b>	J6AD (DZSB)	○	-
<b>17" 'Aoraki' Alloy wheel</b>	DZSE	-	●



16" Steel Wheel with 'Tongariro' wheel trim



16" 'Taranaki' Alloy wheel



17" 'Aoraki' Alloy wheel



		50kWh Electric Battery	
Derivative		Standard length	Long length
DRIVETRAIN	Maximum power hp (Kw)	136 (100) @ 5500	
	Maximum torque Nm / rpm	260 / 3674	
	Battery Capacity (kWh) / Battery	50	
	Battery Warranty	8 years / 100,000 miles for 70% capacity	
	Electric Range WLTP (miles)	Up to 172	
	Service Schedule	Initial operation 8,000 miles / 1 year, first scheduled service 16,000 miles / 2 years, then every 16,000 miles / 2 years thereafter	
	On Board Charger (kW)	7.4	
BRAKES	Front and rear discs	●	
SUSPENSIONS AND TYRES	Front suspension	Pseudo MacPherson	
	Rear suspension	Panhard bar rear train	
REGULATED EMISSIONS	Carbon monoxide (mg/km)	-	
	Total hydrocarbons (mg/km)	-	
	Nitrogen Oxides (mg/km)	-	
	Total Hydrocarbons + Nitrogen	-	
	Particulate Matter (mg/km)	-	
	Carbon Dioxide (CO2) emissions Combined (g/km)**	0	
ELECTRIC ENERGY	Electric Energy Consumption (Wh/km)	187-227	
	Electric Range (Miles)	152 -182	
PERFORMANCE	Maximum speed (mph)	84	
	Acceleration 0-62 mph driver only (sec)	11.2	
VEHICLE WEIGHT INFORMATION (KG)	Gross vehicle weight	2305	2320
	Mass in Service	1856	1904
	Kerb weight	1690	1766
	Gross train weight	3055	3070
	Maximum braked trailer weight	750	
INSURANCE CODES	Allure	19E	20E
	GT	20E	20E

The fuel consumption or electric range achieved, and CO2 produced (where applicable), in real world conditions will depend upon a number of factors including, but not limited to: the accessories fitted (pre and post registration); the starting charge of the battery; variations in weather; driving styles and vehicle load. The WLTP (Worldwide Harmonised Light Vehicles Test Procedure) is used to measure fuel consumption, electric range and CO2 figures.

Figures shown are for comparison purposes and should only be compared to the fuel consumption, electric range and CO2 values of other cars tested to the same technical standard.

Figures quoted reflect a range of configurations (including non-UK market vehicles) and are subject to changes resulting from ongoing product development, range evolutions, testing and evaluations.

Electric figures shown are provisional and for comparison purposes and should only be compared to the fuel consumption and CO2 values of other cars tested to the same technical standard.

^ 'LOW': Low speed city driving, representative of city centre driving, maximum 35mph.

^^ 'MEDIUM': Medium speed town driving, representative of town or suburban driving, maximum 50mph.

^^^ 'HIGH': High speed rural driving, representative of A-road or dual carriageway driving, maximum 60mph.

^\* 'EXTRA HIGH': Extra High speed motorway driving, representative of a typical European motorway, maximum 81mph.

^^^ 'COMBINED': A mixed journey average of all elements



**EXTERNAL DIMENSIONS**

Length Standard / Long (mm)	4,403 / 4,753
Width (mm)	2,107
Height Standard / Long (mm)	1,878 / 1,882
Wheelbase Standard / Long (mm)	2,785 / 2,975
Front - rear overhang Standard / Long (mm)	892 / 726 / 892 / 886
Front / rear track width (mm)	1,553 / 1,567
Approach / departure angles (degree)	17.5 / 25.7
Ground clearance (mm)	216
Sliding side door Max. opening width (mm)	737
Sliding side door opening height	1145

**INTERNAL DIMENSIONS**

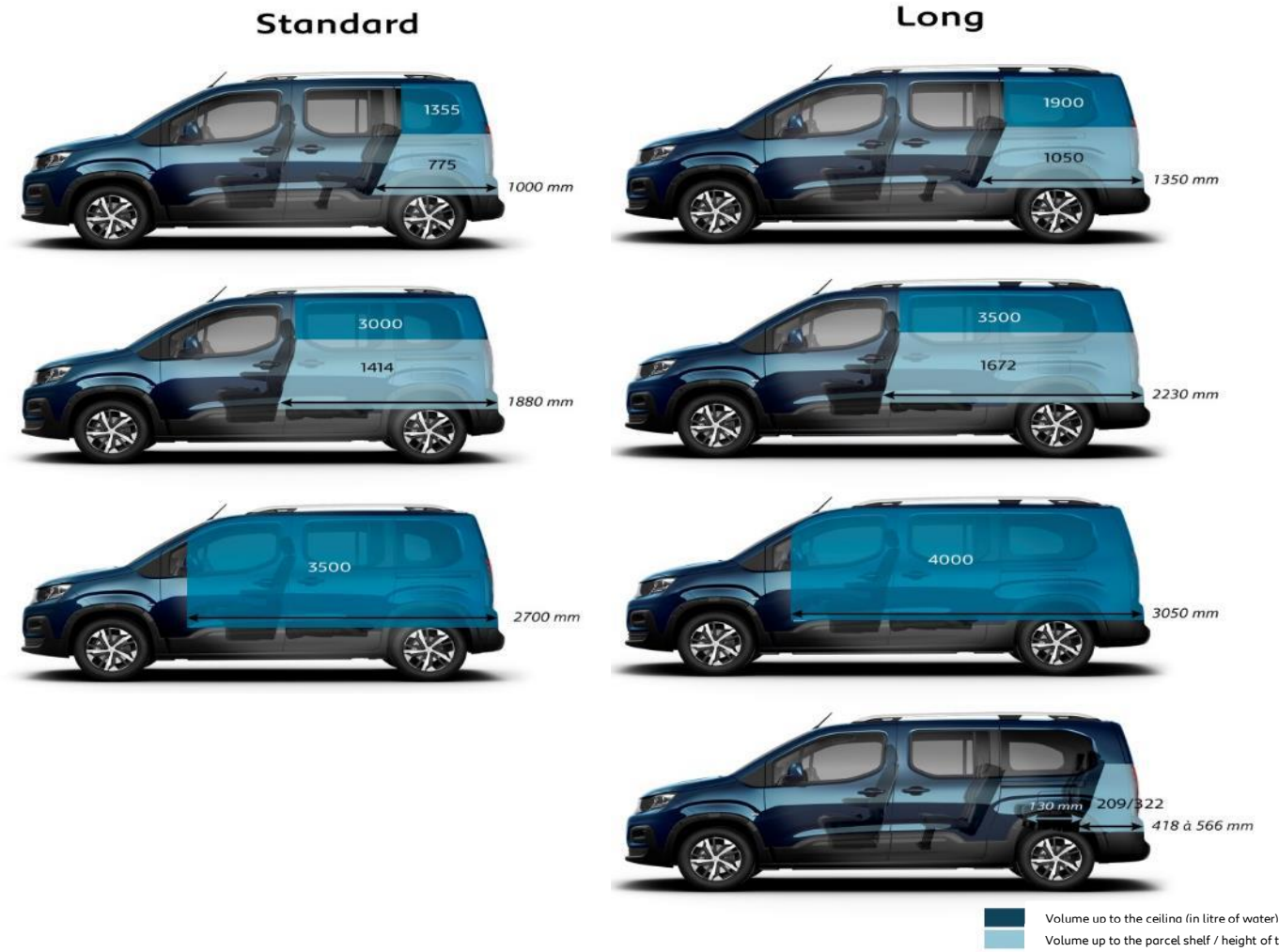
Number of seats Standard / Long	5 / 7
Front 2nd row elbow room (mm)	1,509
Front 2nd row shoulder room (mm)	1,465





**BOOT, STORAGE & FUEL TANK**

Maximum loading length Standard / Long (mm)	2,700 / 3,050
Max. loading length behind row 1 (maximum forward position) Standard / Long (mm)	1,880 / 2,230
Max. loading length with passenger seat folded Standard / Long (mm)	2,700 / 3,050
Max. loading length behind row 2 Standard / Long (mm)	1,000 / 1,350
Max. loading length behind row 3 Standard / Long (mm)	236 / 418 to 566
Opening of boot, height / width (mm)	1,195 / 1,126
Boot volume under the parcel shelf Standard / Long with 3rd row removed	775 / 1,050
Boot volume up to the ceiling Standard / Long with 3rd row removed (litres)	1,355 / 1,900
Boot volume under the parcel shelf with 2nd row folded Standard / Long with 3rd row removed (litres)	1,414 / 1,672
Boot volume up to the ceiling with 2nd row folded Standard / Long with 3rd row removed (litres)	3,000 / 3,500
Boot volume up to the ceiling with 2nd row folded and passenger seat folded Standard / Long with 3rd row removed (litres)	3,500 / 4,000
Max. volume of storage areas in the passenger compartment Standard /	186 <sup>^</sup> / 94
Fuel tank capacity Petrol / Diesel (litres)	60 / 51
AdBlue <sup>®</sup> tank (litres)	17

<sup>^</sup>with Zenith<sup>®</sup> roof




# PEUGEOT e-Rifter: Service Contracts

## PEUGEOT offer two levels of Service Contract:

### PEUGEOT Service Plans

#### What's included:

- PEUGEOT Service Plans offer complete assurance that all your servicing costs will be completely covered for the duration of the plan
- We offer PEUGEOT Service Plans for up to five years with many mileage options
- One-off up front or monthly direct debit payment options available
- All packages are affordable and inflation proof, which means they will remain at a fixed cost for the duration of the plan.

#### Monthly price examples\*:

	36 Months / 30,000 Miles	48 Months / 40,000 Miles	60 Months / 50,000 Miles
e-Rifter	£6.70 per month	£8.64 per month	£8.53 per month

\* Price examples based on an annual mileage of 10,000 per annum

A PEUGEOT Service Plan can be purchased up to 12 months after registration date. The prices quoted above are indicative, for a bespoke quote please contact your local PEUGEOT Retailer. If the plan is taken out after the date of registration an additional payment will be required to cover this starting period. Any normal wear and tear maintenance work such as replacement of tyres, brake pads, brake discs, clutches, shock absorbers, wipers, batteries, bulbs, silencer, exhausts and windscreens are excluded. Servicing must be carried out by a PEUGEOT Authorised Repairer in the UK. PEUGEOT Motor Company reserve the right to change, amend or withdraw this product at any time.

### Extended Peugeot Assistance\*

#### What's included: Extension of your PEUGEOT Assistance Cover

- Offers you the opportunity to extend PEUGEOT Assistance up to a further two years
- Cover includes:
  - PEUGEOT Assistance from Home
  - PEUGEOT Roadside Assistance
  - PEUGEOT Recovery
  - PEUGEOT Onward Travel
  - PEUGEOT European Cover

\* Excludes non-vehicle induced faults

To find out about extending your PEUGEOT Assistance cover, call 0800 294 0294.



## Manufacturers Recommended Retail Price On The Road

The On the Road MRRP featured includes the following from April 2023:

Tax band	CO2 (g/km)	First Year VED	Annual Tax	First Reg fee	Delivery Charge	VAT @ 20% on Delivery	Total OTR Costs Electric Cars
		Electric Cars	Electric Cars				
<b>A</b>	0	£0.00	£0.00	£55.00	£750.00	£150.00	<b>£955.00</b>
<b>B</b>	1-50	£0.00	£170.00	£55.00	£750.00	£150.00	<b>£955.00</b>
<b>C</b>	51-75	£20.00	£170.00	£55.00	£750.00	£150.00	<b>£975.00</b>
<b>D</b>	76-90	£120.00	£170.00	£55.00	£750.00	£150.00	<b>£1,075.00</b>
<b>E</b>	91-100	£155.00	£170.00	£55.00	£750.00	£150.00	<b>£1,110.00</b>
<b>F</b>	101-110	£175.00	£170.00	£55.00	£750.00	£150.00	<b>£1,130.00</b>
<b>G</b>	111-130	£200.00	£170.00	£55.00	£750.00	£150.00	<b>£1,155.00</b>
<b>H</b>	131-150	£245.00	£170.00	£55.00	£750.00	£150.00	<b>£1,200.00</b>
<b>I</b>	151-170	£635.00	£170.00	£55.00	£750.00	£150.00	<b>£1,590.00</b>
<b>J</b>	171-190	£1,030.00	£170.00	£55.00	£750.00	£150.00	<b>£1,985.00</b>
<b>K</b>	191-225	£1,555.00	£170.00	£55.00	£750.00	£150.00	<b>£2,510.00</b>
<b>L</b>	226-255	£2,210.00	£170.00	£55.00	£750.00	£150.00	<b>£3,165.00</b>
<b>M</b>	Over 255	£2,595.00	£170.00	£55.00	£750.00	£150.00	<b>£3,550.00</b>

VAT is calculated at 20%

VAT is not applicable to cars sold in the Channel Islands

Cars with a list price of over £40,000 at first registration will pay an additional rate of £390 per year on top of annual tax 'standard rate', for five years from the start of the second licence, before returning to the rates listed above. This supplement does not apply to electric vehicles.

## PEUGEOT 3 Years of Warranty

All vehicles first registered in the UK and purchased from a UK PEUGEOT Retailer benefit from a PEUGEOT 2 year unlimited mileage manufacturer's warranty and a free optional additional 1 year of warranty provided by the PEUGEOT RetailNetwork in the UK.

## PEUGEOT Assistance

All new PEUGEOTs come with PEUGEOT Assistance, our breakdown assistance service.

PEUGEOT Assistance is available every minute of the day and night; 365 days of the year, for you and anyone else driving your PEUGEOT with your permission.

Full details are available at [www.peugeot.co.uk](http://www.peugeot.co.uk)

## Terms and Conditions

All information and prices correct at time of publication, but are subject to change at any time without prior notice (which may occur as a result of matters including, but not limited to, any changes in legislation and/or any changes by the government).

It is our policy to continually improve our vehicles in every way. To avoid any misunderstandings you are advised to check with your PEUGEOT Dealer the prices, specification (including colour), equipment, accessories and equipment relating to any PEUGEOT vehicle and the exact cost and availability prior to ordering.

Where a feature is described as an option in this publication it should be assumed that it is at extra cost unless specifically stated otherwise.

Issued by Sales and Marketing, PEUGEOT Motor Company PLC, Pinley House, Sunbeam Way, Coventry CV3 1ND.



